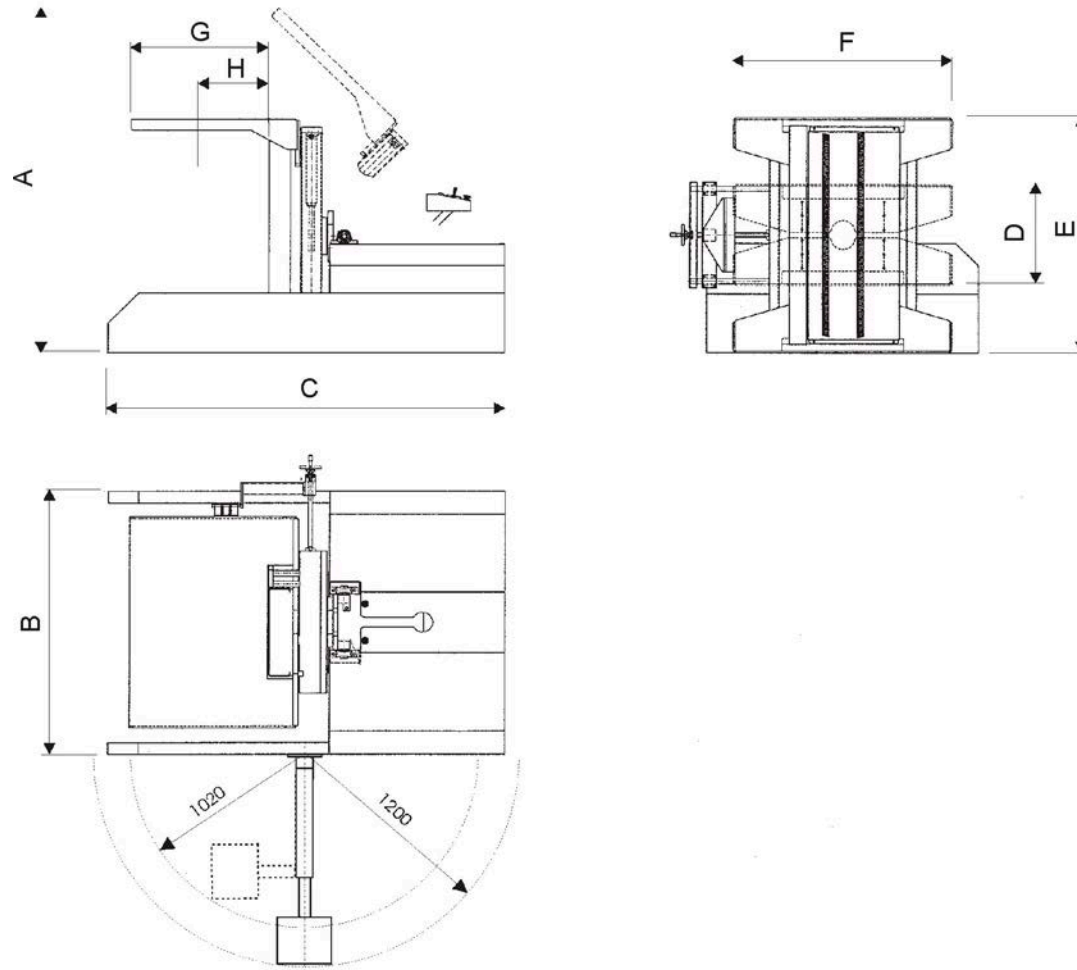


PILE TURNER PW 6

Technical data



	PW - 6 ABV
A [mm]	2.630
B [mm]	2.200
C [mm]	3.000
D [mm]	780
E [mm]	1.830
F [mm]	1.616
G [mm]	1050
H [mm]	525
Weight, net [kg]	2.470
Format, min. (X) [mm]	880
Format, max. (X) [mm]	1.450
Format, max. (Y) [mm]	1.050
Platform size, max. (X) [mm]	1.480
Platform size, max. (Y) [mm]	1.100
Pile height, max., incl. 2 machine pallets [mm]	1.740
Pile height, min., incl. 2 machine pallets [mm]	750
Carrying capacity, max. [kg]	1.800
Duration of turning cycle / pile (sec.)	68
Max. height (incl. swivel area) [mm]	2.630
Electr. power draw (apparent power) [kVA]	7,8
Thermal output [BTU/h]	26.621

Please note!

The wire cross section of the main power supply to the machine must comply with the regulations in the country of use. The same applies to the plug-in connections used.

