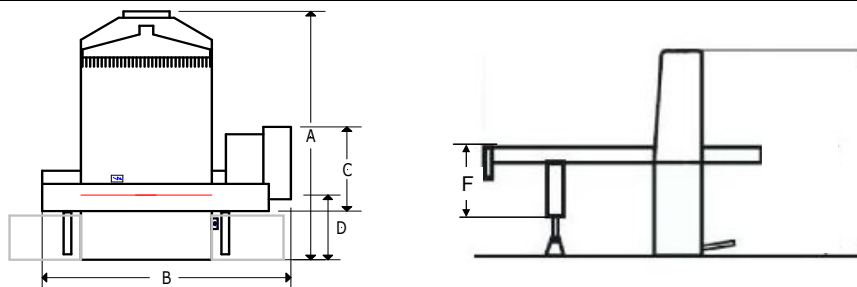


High Speed Cutter

technical data		POLAR 66	POLAR 78	POLAR 92	POLAR 115	POLAR 137	POLAR 155	POLAR 176
cutting width	[mm in]	670 26.38	780 30.71	920 36.22	1,150 45.28	1,370 53.94	1,550 61.02	1,760 69.29
feeding depth	[mm in]	670 26.38	780 30.71	920 36.22	1,150 45.28	1,450 57.09	1,550 61.02	2,000 78.74
feeding height max. (without false clamp)	[mm in]	80 3.15	120 4.72	130 5.12	165 6.50	165 6.50	165 6.50	165 6.50
front table length (D)	[mm in]	670 26.38	695 27.36	695 27.36	715 28.15	730 28.74	750 29.53	750 29.53
table height	[mm in]	900 35.43	900 35.43	900 35.43	900 35.43	900 35.43	900 35.43	900 35.43
safety clamp pressure	[daN lbs]	—	30 66	30 66	30 66	30 66	30 66	50 110
clamp pressure, min	[daN lbs]	200 441	150 331	150 331	150 331	150 331	150 331	150 331
clamp pressure, max	[daN lbs]	1,500 3,307	3,000 6,614	3,500 7,716	4,500 9,921	5,500 12,125	6,000 13,228	7,000 15,432
backgauge speed on return way (0 - ...)	[mm/sec in./sec]	70 2.76	200 7.87	200 7.87	300 11.81	300 11.81	300 11.81	300 11.81
knife speed	cycles/min	20	45	45	45	45	45	45
knife thickness	[mm in]	9.70 0.38	11.70 0.46	11.70 0.46	13.75 0.54	13.75 0.54	13.75 0.54	13.75 0.54
knife grinding reserve (HSS18 knife), max	[mm in]	22 0.87	25 0.98	30 1.18	50 1.97	50 1.97	50 1.97	50 1.97
smallest cut without false plate, manual	[mm in]	—	15 0.59	18 0.71	20 0.79	20 0.79	30 1.18	30 1.18
smallest cut without false plate, automatically	[mm in]	15 0.59	20 0.79	25 0.98	25 0.98	25 0.98	35 1.38	35 1.38
smallest cut with false plate, automatically	[mm in]	50 1.97	70 2.76	90 3.54	95 3.74	95 3.74	120 4.72	120 4.72
noise level (after EN 13023)	[dB(A)]	76.5	77	77	77	77	77	77
installation data								
width (B)	[mm in]	1,250 49.21	1,580 62.20	1,770 69.69	2,360 92.91	2,580 101.57	2,750 108.27	2,960 116.54
depth (A)	[mm in]	1,825 71.85	2,020 79.53	2,230 87.80	2,560 100.79	2,840 111.81	2,980 117.32	3,450 135.83
depth frame (C)	[mm in]	800 31.50	530 20.87	710 27.95	970 38.19	950 37.40	1,000 39.37	1,040 40.94
height frame (E)	[mm in]	1,520 59.84	1,570 61.81	1,590 62.60	1,710 67.32	1,710 67.32	1,740 68.50	1,740 68.50
height table (F)	[mm in]	520 20.47	430 16.93	400 15.75	520 20.47	520 20.47	520 20.47	520 20.47
total weight net	[kg lbs]	620 1,367	1,350 2,976	1,920 4,233	3,230 7,121	4,150 9,149	4,950 10,913	6,000 13,228
static floor load	[daN/m ² lbs/sqft]	330 69	626 131	700 146	755 158	731 153	784 164	780 163
specific surface pressure	[daN/cm ² lbs/sqin]	—	1.7 24	1.8 26	1.7 25	1.9 27	2.5 36	2.8 40
dynamic surcharge	[%]	20	20	20	20	20	20	20
voltage supply single phase 180-240 V, 50/60 Hz								
power input	[A]	2.2	—	—	—	—	—	—
fusing max	[A]	32	—	—	—	—	—	—
voltage supply three phase 200-240 V, 50/60 Hz								
power input	[A]	2.2	2.4	3	4	4.5	5.5	5.5
fusing max	[A]	25	20	20	30	30	35	35
voltage supply three phase 360-420 V, 50/60 Hz								
power input	[A]	2.2	2.4	3	4	4.5	5.5	5.5
fusing max	[A]	16	16	16	20	25	32	32
electrical power input (apparent power)	[kVA]	2.4	3.45	4.45	5.7	6.6	8.2	8.2
power output (thermal rating)	[kW]	2.4	3.45	4.45	5.7	6.6	8.2	8.2
power output (thermal rating)	[BTU]	8,191	11,775	15,188	19,454	22,526	27,987	27,987

technical details are subject to change.



High Speed Cutter

technical data		POLAR 66	POLAR 78	POLAR 92	POLAR 115	POLAR 137	POLAR 155	POLAR 176
options: backgauge								
swivel backgauge adjustable range	[mm in]	—	—	—	1 0.06	2 0.06	2 0.07	2 0.07
tiltable backgauge adjustable range (overcut)	[mm in]	—	—	—	2 0.08	2 0.08	2 0.08	2 0.08
tiltable backgauge adjustable range (undercut)	[mm in]	—	—	—	1 0.04	1 0.04	1 0.04	1 0.04
downholder backgauge feed depth min.	[mm in]	—	—	—	250 9.84	250 9.84	250 9.84	250 9.84
downholder backgauge pressure max.	[bar]	—	—	—	1	1	1	1
downholder backgauge compressed air @ 6-8 bar	[l/min]	—	—	—	1	1	1	1
option: down holder in front of knife								
feeding height min.	[mm in]	—	—	—	25 0.98	25 0.98	25 0.98	—
compressed air @ 6-8 bar	[l/min]	—	—	—	1	1	1	—
with air for waste: compressed air @ 6-8 bar	[l/min]	—	—	—	1	1	1	—
option: Autotrim								
waste removal max.	[mm in]	—	—	—	80 3.15	80 3.15	80 3.15	80 3.15
lowering front table up to	[mm in]	—	—	—	4 0.16	4 0.16	4 0.16	4 0.16
smallest cut with false plate, automatically	[mm in]	—	—	—	100 3.94	100 3.94	120 4.72	120 4.72
depth frame (G)	[mm in]	—	—	—	1,670 65.75	1,670 65.75	1,710 67.32	1,740 68.50
compressed air @ 6-8 bar	[l/min]	—	—	—	100	100	100	100
option: retractable side gauge								
loading width left max. (L)	[mm in]	—	—	—	850 33.46	1,215 47.83	1,340 52.76	1,790 70.47
loading width right max. (R)	[mm in]	—	—	—	—	885 34.84	980 38.58	1,430 56.30
compressed air per side @ 6-8 bar	[l/min]	—	—	—	2	2	2	2
option: firmly mounted lift								
pallet size max. (y)	[mm in]	—	—	—	800 31.50	800 31.50	1,050 41.34	—
pallet size max. (x)	[mm in]	—	—	—	1,200 47.24	1,200 47.24	1,450 57.09	—
usable fork length	[mm in]	—	—	—	900 35.43	900 35.43	1,100 43.31	—
Hub max.	[mm in]	—	—	—	880 34.65	880 34.65	880 34.65	—
Tragkraft max.	[kg lbs]	—	—	—	1,000 39.37	1,000 39.37	1,000 39.37	—
width (B)	[mm in]	—	—	—	3,464 136.38	3,684 145.04	4,219 166.10	—
height	[mm in]	—	—	—	1,862 73.31	1,862 73.31	1,862 73.31	—
weight, net	[kg lbs]	—	—	—	200 7.87	200 7.87	200 7.87	—

technical details are subject to change.

