

P-Net Service "Compucut®"

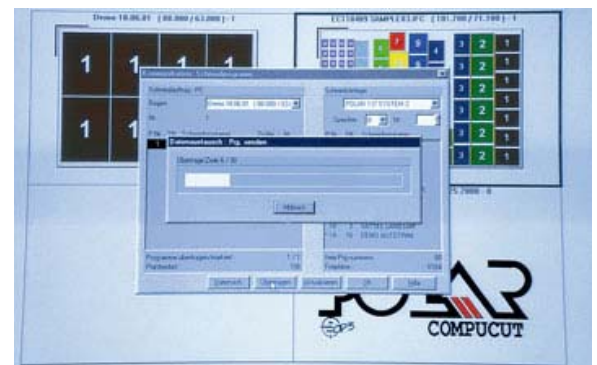
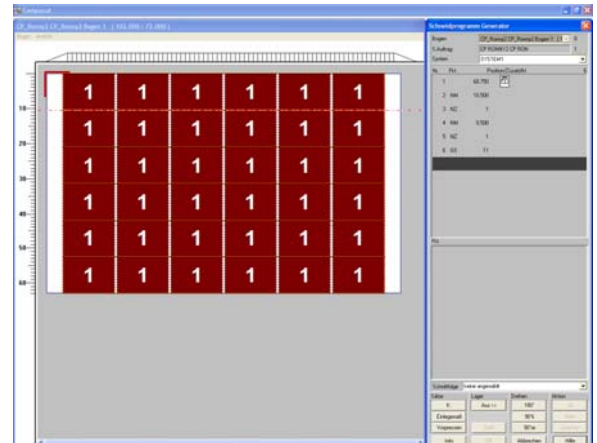
Generates cutting programs outside the high-speed cutter.

Benefits for the customer

- Reduces the programming time to almost zero.
- Increases the high-speed cutter efficiency
- Provides process visualization of the cutting process
- Offers more flexibility

Description

The sheet layout for the cutting program is either manually prepared or based on digital prepress data (CIP4/JDF). Depending on the setup of the sheet, the program can be generated either manually, semi-automatically or, for uniform sheets, even in a fully automated process. In order to ensure the best possible program cycle Compucut automatically optimizes the cutting programs by adding the required comments, additional functions and information for operators. Once the cutting program has been set up, it will be transferred to the high-speed cutter via P-Net.



The following prepress connections are implemented

- | | | | |
|--------------|--|---------------|-----------------------------------|
| - Heidelberg | Prinect Signa Station, Versions 6.1 and higher | - EskoArtwork | ArtPro |
| - Adobe | InDesign | - Krause | Krause Imposition Manager |
| - Agfa | Apogee | - One Vision | Speedflow Impose, Version 4.0 SR3 |
| - Creo/Kodak | Pandora 2.0 Pro and Preps 4.2 Pro and higher | - Screen | Flatworker |

Please note: A separate activation by the pre-press supplier is required for generating the cutting data. You can easily check if Compucut® can use your generated cutting data. Simply send a .jdf oder .ppf test file to POLAR Mohr (Matthias.Langer@polar-mohr.com).

P-Net Service "Compucut®"

System requirements (minimum requirements)

P-Net Server*:

- Operating system: Windows 2000, Windows XP, Windows Vista or Windows 7
- Available hard-disk storage space: 10 GB
- Network card / network connection
- CD-Rom drive

Compucut® computer*:

- Monitor: Min. resolution 1280x1024
- Operating system: see P-Net Server

Please note: For using the Compucut® help system, make sure that the Microsoft Windows help program (WinHlp32.exe) is installed when you are using Windows Vista or Windows 7.

*must be made available by the customer.

Availability

X	Optional on XT	Autotrim	retrofittable
78 - 176	78 - 176	115 - 176	yes

Please visit our website: www.polar-mohr.com